



# MID MURRAY

(Incorporating Murray River Council and Edward River Council)

## Local Emergency Management Plan

June 2024

UNRESTRICTED INFORMATION



## CONTENTS

Part 1 - ADMINISTRATION .....	- 3 -
Authority .....	- 3 -
Purpose .....	- 7 -
Objectives.....	- 7 -
Scope.....	- 7 -
Principles .....	- 7 -
Test & Review Process .....	- 8 -
Part 2 – COMMUNITY CONTEXT .....	- 9 -
Annexure A – Community Profile .....	- 9 -
General.....	- 9 -
Land & Topography .....	- 10 -
Climate .....	- 10 -
Land Use.....	- 11 -
Population & People .....	- 14 -
Employment .....	- 15 -
Economy & Industry .....	- 17 -
Waterways, Water Storages & Lakes .....	- 18 -
Key Infrastructure.....	- 20 -
Annexure B – Vulnerable Person Network -Known Service Provider List .....	- 23 -
Annexure C – Vulnerable Facilities List .....	- 26 -
Edward River Council .....	- 26 -
Murray River Council .....	- 28 -
Annexure D – Hazards & Risks Summary .....	- 31 -
Annexure E – Local Sub Plans, Supporting Plans & Policies .....	- 35 -

PART 1 - ADMINISTRATION

AUTHORITY

The Mid Murray Local Emergency Management Plan (EMPLAN) has been prepared by the Mid Murray Local Emergency Management Committee in compliance with the State Emergency & Rescue Management Act 1989. The chairperson LEMO will be one in the same for local government act.

APPROVED



Joint Chair – Jack Bond  
**LEMO – Mid Murray Zone Local Emergency Management Committee**  
Date: 27/06/24



Mark Dalzell (Jun 28, 2024 07:54 GMT+10)

Joint Chair – Mark Dalzell  
**LEMO – Mid Murray Zone Local Emergency Management Committee**  
Date: 27/06/24

ENDORSED



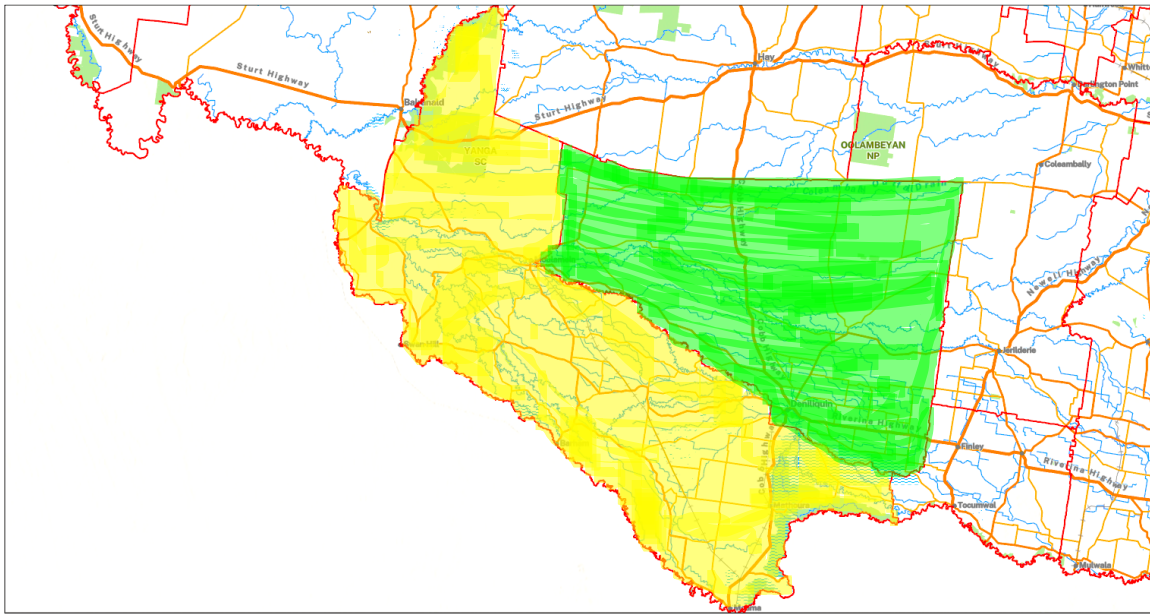
Alternate REOCON on behalf of LEOCON  
Superintendent Paul Smith  
Date: 28/06/24

APPROVED

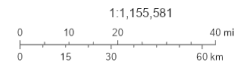


Chair **ASSISTANT COMMISSIONER J.J. CASSAL**  
Riverina Murray Regional Emergency Management Committee  
Date: 17 July 2024.

NSW Administrative Boundaries Theme - Local Government Area



December 14, 2023



Sources: Esri, Airbus DS, USGS, NGA, NASA, CGIAR, N Robinson, NCEAS, NLS, OS, NMA, Geodataspreisen, Rijkswaterstaat, GSA, Geoland, FEMA, Intermap and the GIS user community

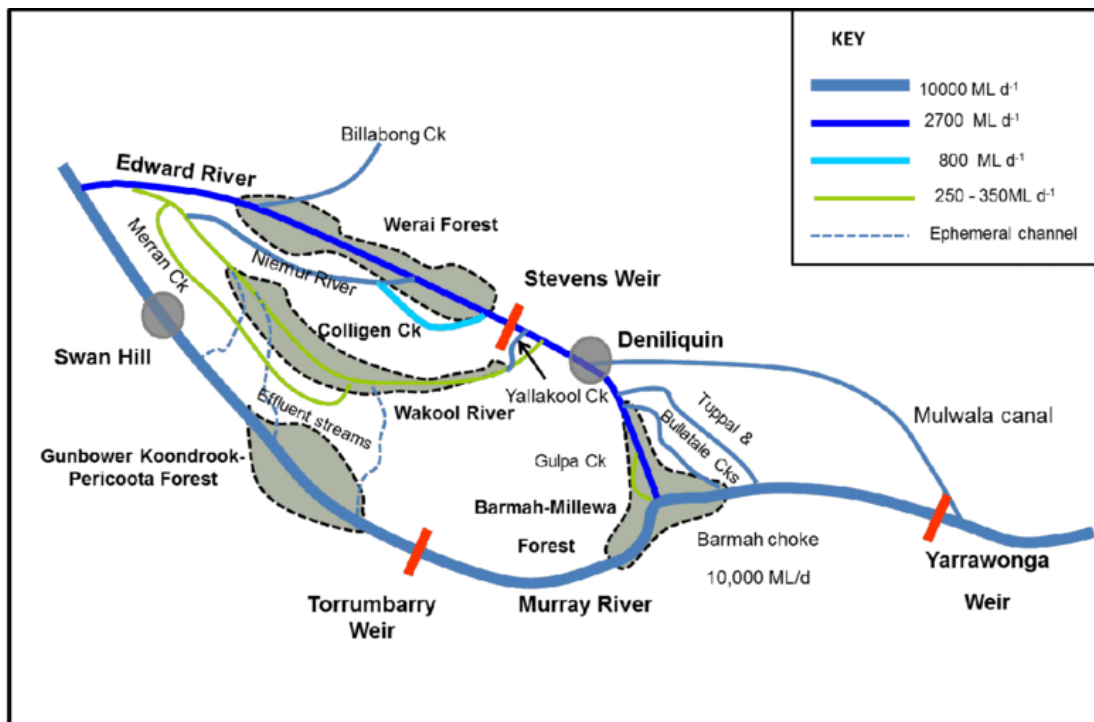
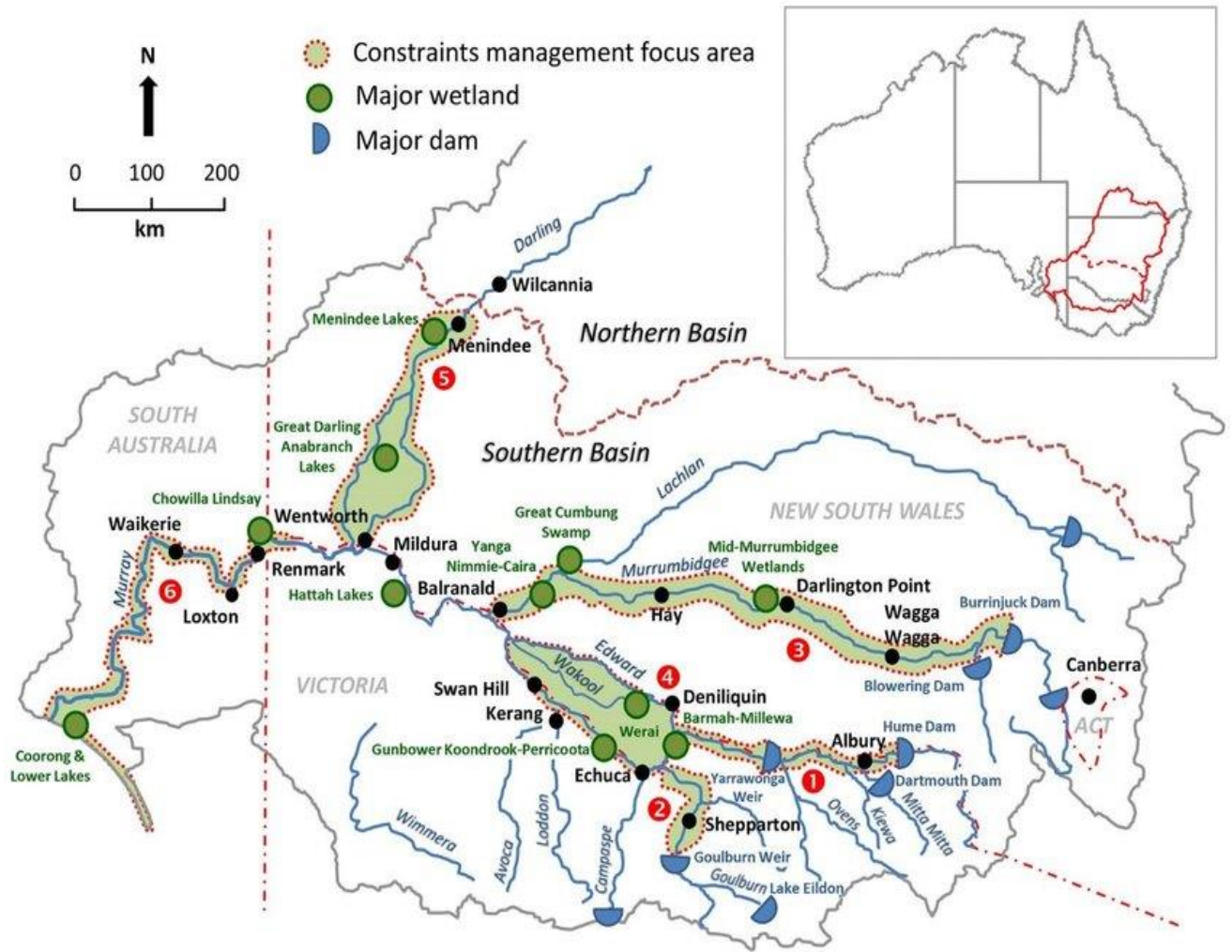
Spatial Services Spatial Data Services  
Esri, HERE, Garmin, FAO, NOAA, USGS | Esri, CGIAR

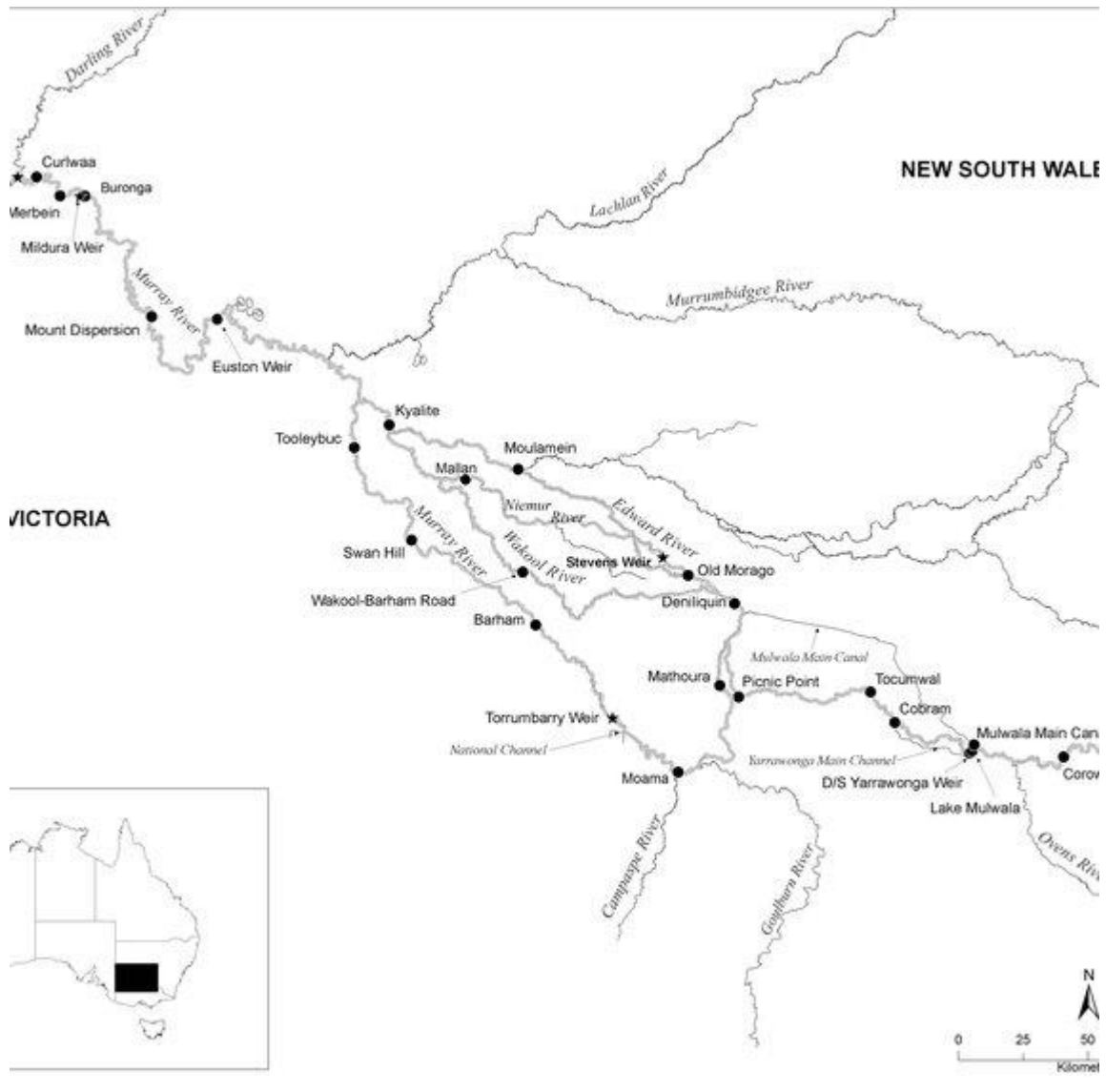


Yellow Area Above



Green Area Above





## PURPOSE

Details arrangements for, prevention of, preparation for, response to and recovery from emergencies within the Local Government Area(s) covered by this plan.

It encompasses arrangements for:

- emergencies controlled by combat agencies;
- emergencies controlled by combat agencies and supported by the Local Emergency Operations Controller (LEOCON);
- emergency operations for which there is no combat agency; and
- circumstances where a combat agency has passed control to the LEOCON.

## OBJECTIVES

The objectives of this plan are to:

- define participating organisation and functional area roles and responsibilities in preparation for, response to and recovery from emergencies;
- set out the control, co-ordination and liaison arrangements at the local level;
- detail activation and alerting arrangements for involved agencies; and
- detail arrangements for the acquisition and co-ordination of resources.

## SCOPE

The plan describes the arrangements at local level to prevent, prepare for, respond to and recover from emergencies and also provides policy direction for the preparation of Sub Plans and Supporting Plans:

- Arrangements detailed in this plan are based on the assumption that the resources upon which the plan relies are available when required; and
- The effectiveness of arrangements detailed in this plan are dependent upon all involved agencies preparing, testing and maintaining appropriate internal instructions, and/or standing operating procedures.

## PRINCIPLES

The following principles are applied in this plan:

- a) The Emergency Risk Management (ERM) process is to be used as the basis for emergency planning in New South Wales. This methodical approach to the planning process is to be applied by Emergency Management Committees at all levels.
- b) Responsibility for preparation, response and recovery rests initially at Local level. If Local agencies and available resources are not sufficient, they are augmented by those at Regional level.
- c) Control of emergency response and recovery operations is conducted at the lowest effective level.
- d) Agencies may deploy their own resources from their own service from outside the affected Local area or Region if they are needed.
- e) The Local Emergency Operations Controller (LEOCON) is responsible, when requested by a combat agency, to co-ordinate the provision of resources support. EOCs would not normally assume control from a combat agency unless the situation can no longer be contained. Where necessary, this should only be done after consultation with the Regional

Emergency Operations Controller (REOCON) and agreement of the combat agency and the appropriate level of control.

- f) Emergency preparation, response and recovery operations should be conducted with all agencies carrying out their normal functions wherever possible.
- g) Prevention measures remain the responsibility of authorities/agencies charged by statute with the responsibility.

## TEST & REVIEW PROCESS

The Mid Murray Local Emergency Management Committee (LEMC) will review this Plan every three (3) years, or following any:

- activation of the Plan in response to an emergency;
- legislative changes affecting the Plan; and
- exercises conducted to test all or part of the Plan.



**GENERAL**

The area covered by this plan is the combined local government areas of **Edward River Council and Murray River Council** which comprises the MID MURRAY local emergency management area.

The local government area of councils encompasses an area of 20,749km<sup>2</sup> and is home to 8,456 Edward River (2021) and 12,850 Murray River (2021) residents and is in the Southern Riverina, at least 800km South West of Sydney and 205km North of Melbourne. The LGA includes 41 Towns and Settlements as presented in the table 1:

Main Population Centers	Population 2021 Census	Settlements	Population 2021 Census
Barham	1,569	Dilpurra	29
Deniliquin	7,432	Goon	42
Koraleigh	291	Goodnight	86
Mathoura	1,002	Kyalite – East	87
Moama	6,930	Mallan	45
Moulamein	489	Mayrung	171
Murray Downs	274	Mellool	43
Tooleybuc	336	Niemur	74
Wakool	262	Noorong	20
<b>Settlements</b>		Pretty Pine	59
Blighty	192	Speewa	115
Booroorban	36	Stony Crossing	27
Bullatale	41	Tantonan	15
Burraboi	106	Thule	25
Caldwell	42	Tullakool	68
Calimo	71	Wanganella	61
Cobramunga	41	Waugorah	9
Cummerangunja	100-150	Womboota	90
Dhuragoon	38	Yanga	5

Information in table sourced from <https://www.abs.gov.au/>

These combined councils have a wealth of physical features including sweeping plains, stands of Redgum forests and is almost surrounded by the Edward and Murray River and its tributaries.

The Mid Murray rural section also joins closely to the townships of Balranald, Berrigan, Finley, Hay, Jerilderie, Moulamein, and Victorian LGA's such as Moria Shire, Campaspe Shire, Gannawarra Shire and Swan Hill Rural Council. They also border NSW LGA's such as Balranald Shire, Hay Shire, Murrumbidgee Council and Berrigan Shire Council.

---

## LAND & TOPGRAGHY

The area covered by the Mid Murray is almost surrounded by the Edward and Murray Rivers and its tributaries.

The Southern Border is formed by the Murray River, with the Edward, Wakool, Murrumbidgee and Niemur Rivers, crossings the landscape in the northern parts. The Gulpa Creek is another important waterway which leaves the Murray and flows past Mathoura. The Cadell Fault, which changed the course of the Murray River about 30,000 years ago, traverses the area from north to south in the Southern Riverina area.

In the Northern area the Billabong Creek runs into the Edward River at Moulamein passing through the towns of Morven, Culcairn, Walbundrie, Rand, Jerilderie, Conargo, Wanganella and Moulamein. The creek has a catchment area of 791 square kilometres and is the main present drainage line between the Murray and Murrumbidgee Rivers.

The terrain is largely flat floodplain country, consisting predominately of agricultural land. This area includes wetlands of international significance and part of the largest river Redgum forest in Australia, the Murray Valley Regional and National Parks (NSW) and the adjoining Barmah National Park (VIC). There are also several National Parks within the Mid Murray Zone with one of the largest being Yanga in the far north-west. The Mid Murray includes the Southern Riverina which forms part of the irrigation and drainage district established under the provisions of the Irrigation Act 1912 and the Water Act 1912 and has an extensive network of irrigation supply channels and infrastructure.

Soil types vary; however, the dominant types are red brown earths, grey, brown and red clays and soil complex associated with ancestral streams.

---

## CLIMATE

The climate of the Mid Murray region has a strong seasonal cycle, with cool to cold winters and warm to hot summers. It is considered likely to be one of the regions of New South Wales most severely impacted by climate change because of increasing temperatures, changes in the volume and distribution of rainfall, reduced snowfalls, and decreases in river flows.

Rainfall throughout the Deniliquin / Conargo area is winter spring dominated, with average annual rainfall of 370mm, mean maximum annual temperature of 23.60C and mean minimum annual temperature of 9.50C. Mean maximum monthly temperature occurs in January at 33.10C and mean minimum monthly temperature occurs in July at 3.30C.

The Impacts of Climate Change on Natural Hazards Profile-State Overview 2010 report identifies that:

- Daily maximum temperatures are projected to rise across all seasons by an average of 1.5–3°C, with the greatest increase in winter and spring (2–3°C). Nights are also projected to be warmer by an average 0.5–2°C, with the greatest increase in spring (1–2°C).
- Rainfall is projected to shift from winter to summer dominance with overall total falls declining, especially in the winter growing season. This decline is projected to be 20–50%, with the greatest reduction in southern parts of the region. Spring and autumn are projected to be similar to winter with rainfall decreasing by up to 50%, and the largest decreases occurring in the south and west. Evaporation is projected to increase in these seasons, exacerbating the dry conditions.
- Projected increases in the severity of short-, medium- and longer-term droughts are likely to lead to a decrease of up to 15% in total runoff.
- El Niño years experienced in the region are likely to continue to result in an increased probability of lower-than-average rainfall and become hotter.

- La Niña years experienced in the region are likely to continue to result in an increased probability of higher-than-average rainfall and become warmer, with storms producing heavy downpours likely to become more frequent.
- Projections indicate that despite water stress overall becoming more intense, there is a risk that flood-producing rainfall events are likely to become more frequent and more intense with increased summer rainfall in La Niña years in the Riverina Murray region which includes extensive floodplains and wetlands.

Area	Year 2030	Year 2050	Year 2090
MRC	0.9°C Temperature , 0% Rain	1.2°C Temperature , 1% Rain	2°C Temperature , -4% Rain
ERC	0.9°C Temperature , 0% Rain	1.2°C Temperature , 1% Rain	2°C Temperature , -4% Rain

Model run: RCP4.5 (conservative CO2 controls into the future), Maximum Consensus

CSIRO – Climate Change in Australia: Projections for Australia’s NRM Areas

[Analogues Explorer \(climatechangeinaustralia.gov.au\)](http://climatechangeinaustralia.gov.au)

---

## LAND USE

### Edward River Council

Edward River Council was formed in 2016 from the merger of the Deniliquin Council with the surrounding Conargo Shire. The combined area covers the urban area of Deniliquin and the surrounding region to the north and west across pastoral southern Riverina plains over 8,881 square kilometres.

The largest town in the area is Deniliquin with other towns / localities in the area that include Blighty, Booororba, Conargo, Mayrung, Morago, Pretty Pine and Wanganella.

Deniliquin has a large industrial base to service the surrounding rural areas, including the SunRice rice mill, abattoirs, and light and heavy manufacturing.

While being a rural town, Deniliquin still includes a large percentage of rural and rural-residential land holdings. These support a wide range of agricultural activities including cereal crops (wheat and rice), cattle, sheep, and exotic animals.

The rich fertile soil is enhanced by widespread irrigation, which is the lifeblood of the district.

Edward River Council services the rural town of Deniliquin and the extensive rural area surrounding the township. It also acts a regional centre for the nearby rural areas and parts of Murray River Council.

Deniliquin is situated on the Edward River, which is a confluence of the Murray River. The river flows out of Murray River near Picnic Point and back into the Murray River near Kyalite. The river provides an excellent environment for numerous activities, including swimming, water skiing and fishing.

The wider rural area of the Edward River Council maintains five waste landfill sites at Pretty Pine, Wanganella, Booororban, Conargo, and Blighty.

It is home to many large holdings renowned for their stud sheep more particularly the Peppin Merino Bloodline developed by the Peppin family in the 1860's.

The rich fertile soil is enhanced by widespread irrigation, which is the lifeblood of the district.

The rural area boasts a huge range of Agricultural Industries. They include:

- Stud Sheep
- Stud cattle

- Cereal crops (wheat and rice)
- Wool
- Fat Lambs
- Dairying
- Market gardening
- Agro Forestry
- Aquaculture
- Hydroponics
- Viticulture
- Piggeries
- Exotic Animals
- Olive Groves
- Stock feed lots

### **Murray River Council**

Murray River Council comprises 11,865 square kilometres and covers the northern bank of the Murray River and hinterland from Moama to Tooleybuc. The area is home to approximately 12,373 residents and is one of the fastest growing regional centres in NSW.

The largest town in the area is Moama in the far south east, other towns and localities in the area include Barham, Bunnaloo, Burraboi, Caldwell, Cunninyeuk, Koraleigh, Kyalite, Mathoura, Moulamein, Murray Downs, Speewa, Tantonan, Tooleybuc, Wakool and Wamboota.

The area offers a diverse natural environment, including irrigated and dryland agriculture, majestic sweeping plains, stands of Redgum forests, and is almost totally surrounded by the Murray River and its tributaries.

Murray River's natural assets continue to attract locals and visitors alike, forming the backdrop to many recreational activities. With tourism, industry and an idyllic rural lifestyle, Murray River continues to grow and prosper.

The wider rural area of the Murray River Council maintains six waste landfill sites at Moama, Mathoura, Barham, Koraleigh, Wakool and Moulamein.

LAND USE ZONE / TYPE / CLASSIFICATION	AREA (KM <sup>2</sup> )	% OF LGA
RU1 Primary Production	10,080.08	85.00%
RU3 Forestry	413.06	3.48%
RU5 Villages	4.86	0.04%
R1 General Residential	7.83	0.07%
R2 Low Density Residential	0.83	0.01%
R5 Large Lot Residential	5.276	0.04%
B2 Local Centre	0.32	0.00%
B6 Enterprise Corridor	0.40	0.00%
IN1 General Industrial	4.19	0.04%
SP1 Special Activities	1.40	0.01%
SP2 Infrastructure	16.82	0.14%
SP3 Tourist	1.13	0.01%
RE1 Public Recreation	1.19	0.01%
RE2 Private Recreation	3.88	0.03%
E1 National Parks and Nature Reserves	1,215.86	10.25%
E3 Environmental Management	21.93	0.18%
W1 Natural Waterways	72.70	0.61%
W2 Recreational Waterways	6.962	0.06%

## POPULATION & PEOPLE

Both Edward River and Murray River Councils have a balanced gender ratio, with an ageing population, with high proportion of English-speaking residents as per the Table Below:

<b>Gender Diversity</b>			
	<b>Edward River</b>	<b>Murray River</b>	<b>Total</b>
Total Persons	8,457	13,016	21,473
Males	4,224	6,517	10,741
Females	4,233	6,499	10,732
Medium Age (Years)	46.2	49.7	47.95
<b>Age</b>			
0-4 Years	494	689	1183
5-14 Years	1,008	1,575	2583
15-24 Years	932	1,140	2072
25-54 Years	2669	3,938	6607
55-64 Years	1246	1,946	3192
65 Years & Over	1768	3,728	5496
<b>Household Type</b>			
Family Household	2,138	3434	5,572
Lone Person Household	1,112	1341	2,453
Group Household	81	98	179
Average Household size (No. of persons)	2.2	2.4	2.3
<b>Income (Population aged 15 years &amp; over)</b>			
Median Individual Income (annual)	\$ 44,168.00	\$ 42,523.00	\$ 43,345.50
<b>Language</b>			
People who speak a language other than English at home	253	455	3% to 3.5%
<b>Employment</b>			
People who reported being in the labour force in the week before Census night	3918	5834	56.2% 54.6%

Information in above table sourced from [Data by region | Australian Bureau of Statistics \(abs.gov.au\)](https://abs.gov.au)

---

## EMPLOYMENT

Most Common Occupations	Edward River	Murray River
Managers	19.3%	22.2%
Professionals	14.7%	14.4%
Technicians and trades workers	12.6%	13.6%
Community & Personal Service workers	13.1%	10.8%
Clerical and administration workers	11.3%	10.8%
Sales Workers	7.9%	7.4%
Machinery operators and drivers	6.7%	6.2%
Labourers	12%	12.6%
Occupation inadequately described or not stated	26%	2.1%

Information in the above table sourced from [Data by region | Australian Bureau of Statistics \(abs.gov.au\)](#)

### TRANSPORT ROUTES & FACILITIES

On the day of the 2021 Census, the method of travel to work for employed people was predominately by car with 85% of those attending work when by car as a driver or passenger.

Main transport routes through the local area are via road and major road links are:

- Cobb Highway – Echuca (Victoria) to Hay
- Riverina Highway – Deniliquin to Finley
- Sturt Highway – Hay to Balranald

Other main routes include:

- Barmah Road
- Perricoota Road (from Moama)
- Yanga Way
- Deniliquin to Barham Road
- Moulamein to Swan Hill Road
- Moulamein to Barham Road
- Tooleybuc to Sturt Hwy (just south of Balranald)
- Pretty Pine to Moulamein Road
- Moulamein to Maude Road
- Deniliquin to Wakool Road

Convenient transport options are available, including a passenger bus service running several times a day to Melbourne and many regional centres.

Train services between Echuca/Bendigo/Melbourne and Swan Hill/Kerang/Bendigo/Melbourne operate daily. The Victorian Broad Gauge Rail line terminates at Deniliquin. It is mainly a freight line with an occasional tourist steam train from Melbourne.

Residents also benefit from advanced highway infrastructure and an all-weather airport located in Echuca. There is also a good system of local area buses in Moama/Deniliquin and taxis operating in Moama, Deniliquin and Barham.



[Spatial Map Viewer \(nsw.gov.au\)](https://spatialmapviewer.nsw.gov.au)

## **AIR TRANSPORT**

Deniliquin Airport is situated 5 kilometres by road from the Deniliquin CBD and sits on approximately 230 hectares of land near the industrial area of Deniliquin.

There is currently no Regular Public Transport service operating at Deniliquin Airport. Transport to and from the Deniliquin Airport is available on request by the local taxi services.

The current operations area of the airport has a sealed 30 metre wide runway, 1219 metres in length and a natural surface cross strip of 1487 metres in length. There is a comfortable terminal building with facilities and a large, sealed GA aircraft parking area with facilities to tie aircraft down.

Please refer to the Airservices Australia enroute supplement for current and updated information.

All users are encouraged to check current NOTAMS for any works in progress or amendments to the operation of the airport.

The Deniliquin Airport terminal has a kitchenette for pilots as well as bathroom facilities and disabled toilets. Aviation Fuel is available.



Moama's closest airport is the Echuca Aerodrome - Operated by Campaspe Shire Council, we want to encourage pilots, their passengers and aero clubs to land at the McKenzie Road aerodrome and enjoy the facilities.

The aerodrome also supports emergency services such as Air Ambulance Victoria and the Royal Flying Doctor.

#### **About the Echuca Aerodrome**

*Frequency for PAL is 122.8 or manual. Runway 05/23 is grass and is 510 metres in length. (As at April 2024 the Echuca Aerodrome is undergoing upgrade works to extend and widen the existing Runway 17/35 to the length required for emergency services aircraft, increase of pavement strength and the construction of a new helipad and aeromedical shelter.)*

*Council and the Echuca Aero Club maintain the surrounds. Other aerodromes in the vicinity of Echuca, include Deniliquin (NSW - 21mins), Shepparton (VIC - 19mins), and Bendigo (VIC - 23mins).*

---

## **ECONOMY & INDUSTRY**

### **Edward River Council**

The Edward River Council is located within the Wiradjuri Country and home to the Wamba Wamba Perrepa Perrepa People. Deniliquin has a Local Aboriginal Lands Council located at 426 Wood Street, Deniliquin. Deniliquin also is home to the Yarkuwa Indigenous Knowledge Centre with their aims being:

- To collate and maintain cultural, heritage and environmental information as it relates to Wamba Wamba and Perrepa Perrepa country.
- To provide an educational service to the wider community including schools and community groups.
- To engage in negotiations with Local, State and Federal and other agencies on matters relating to culture, heritage and the environment.
- To provide the means for members to develop skills that will allow them to be involved in the provision of educational and research services.
- To provide a centre to facilitate the transfer of knowledge from one generation to the next.
- To acquire and hold title to land and water for the purposes of economic and cultural development.

Major industries in the area include sheep, cattle, rice, timber transport and tourism. The largest rice mill in the Southern Hemisphere is located in Deniliquin. Summer and Easter holidays bring an influx of visitors for water-skiing, camping and hunting – mainly from Victoria.

In 2005/06 29% of Edward River's gross value of agricultural production was from the Rice Industry and this represents 14% of the total rice production in Australia. Conargo Shire also produces 31.3% of the total Central Murray dairy and this represents 0.8% of the total production value of the Australian dairy industry.

The major industry, by Gross Value Add (GVA), in the area is Agriculture including sheep, cattle, rice and wheat with production being located almost entirely within Edward River and Murray River Council LGA's. The largest rice mill in the Southern Hemisphere, operated by 'SunRice', is located in Deniliquin as is a small stock abattoir operated by Australian Meat Group that processes up to 15,000 head of stock per week. Other industries, congregated in the Rural Urban centre of Deniliquin, include Health Care and Social Assistance, Retail, Construction and Manufacturing.

Deniliquin is also a popular holiday destination and attracts over 70,000 visitors each year with over 70% of the visitors coming from Victoria. Summer and Easter are the most popular holiday periods in

the region and bring an influx of visitors for boating and water-skiing, canoeing and kayaking, camping, golf and Food and Beverage. In 2013 Conargo's contribution to Gross Regional Product (GRP) was \$83.3 million whilst Deniliquin's contribution to (GRP), in the same year, was \$546.6 million. The combined (GRP) of the area, \$629.9 million, was the third highest contribution to the Murray Region, behind Albury (\$3.8 billion) and Corowa (\$758.8 million).

### **Murray River Council**

Murray River Council has a strong and diverse business base. Key industries include agriculture, accommodation and food services, manufacturing, construction retail and health care.

The Murray River and its tributaries, redgum forests, the historic Port of Echuca, an abundance of supporting tourism product, major events and a wonderful climate ensure these consistently popular destinations.

During holiday season, the population of Murray River Council can increase up to five times the normal number due to the popularity of the area as a holiday destination. Golf and other sporting events, river activities, including water skiing, camping, fishing and riding the mighty paddle steamers attract large volumes of people.

The Agriculture, Forestry & Fishing industry sector makes the greatest contribution to economic output in the region, which at \$570.7M accounts for 30.07% of total output.

The Murray Region is known for its agriculture and food sector, having both rich alluvial soil and leverages the irrigation opportunities. Whilst its economic prominence has long been linked to agriculture production, Murray River Council's economic drivers are becoming much more varied. The industry sectors that also contribute significantly are retail trade, construction, manufacturing, health and community services, landcare and catchment management, professional services, small service industries and tourism. This diversification continues to create a range of employee and business opportunities.

The industry sector is also the largest employer with 1,167 jobs which represents 24.01% of total employment within the region.

---

## **WATERWAYS, WATER STORAGES & LAKES**

The main bodies of water in the local area are:

### **Edward River Council**

- a) Edward River, an anabranch of the Murray which flows through Deniliquin township from the south and onto Moulamein.
- b) Billabong Creek which flows west through Conargo and Wanganella, roughly bisecting the planning area.
- c) Mulwala Canal which is part of an extensive irrigation system in the southern part of the planning area.
- d) Tuppal Creek which starts near Tocumwal and flows west to join the Edward River near Deniliquin and forms part of the southern boundary of the planning area.
- e) Box Creek which starts near Pine Lodge and flows generally west to join the Edward River near Barratta.
- f) Yanko Creek which flows from the Murrumbidgee River near Narrandera south and west to join the Billabong Creek near Conargo.

- g) Forest Creek which flows generally west from Jerilderie to join the Billabong Creek near Moulamein.

#### **Murray River Council**

- a) The Murray River flows through towns throughout the council area such as Moama, Barham, Murray Downs, Speewa, Koraleigh, Tooleybuc and Goodnight. The Murray River is the longest river in Australia, its tributaries include five of the next six longest rivers in Australia (Murrumbidgee, Darling, Lachlan, Warrego and Paroo Rivers).
- b) Wakool River, an anabranch of the Edward River that is part of the Murray River catchment within the Murray-Darling basin, is located in the western Riverina region of south western NSW, joined by eleven minor tributaries, including the Niemur River, the Wakool River is rejoined by the Edward River near Kyalite not far from where it runs back into the main channel of the Murray at Wakool Junction.
- c) Niemur River, a perennial stream of the Murray catchment and part of the Murray-Darling basin, leaves the Edward River near Moonahcullah, flowing to the west / north-west, joined by five minor tributaries before reaching its confluence with the Wakool River north of Swan Hill.
- d) Edward River, rises at Picnic Point east of Mathoura, as a result of the bottleneck created in the Murray by the Cadell Fault, flowing north through river Redgum forest, reach Deniliquin and then flowing westward through Moulamein. It is joined by six minor tributaries before reaching its confluence with the Wakool River and re-entering the Murray at Wakool Junction near Kyalite.

---

## **KEY INFRASTRUCTURE**

### **DENILIQVIN**

#### **Power Stations, Sub Stations & Key Distribution Points**

- Essential Energy – 270 Finley Road, Deniliquin
- Transgrid – Finley Road, -35.556472, 145.031493

#### **Water Treatment & Key Distribution Networks**

- Edward River Council Water Treatment Plant, Lloyds Lane, Deniliquin

#### **Sewer Treatment & Key Networks**

- Edward River Council Sewerage Treatment Plant, Calimo Street, Deniliquin

#### **Fuel Depots**

- Purtills, 89 McCrabb Road, Deniliquin
- Riordan Fuels, Corner Barham Road and Calimo Street, Deniliquin
- IOR Fuels, Saleyards Road, Deniliquin

#### **Telephone Exchanges**

- 215 Cressy Street, Deniliquin

#### **Commercial Broadcasting Infrastructure**

- Fowler Street Reservoir Deniliquin

### **BARHAM**

#### **Water Treatment & Key Distribution Networks**

- Punt Road, Barham

#### **Sewer Treatment & Key Networks**

- East Barham Road, Barham

#### **Radio Network Infrastructure**

- Moulamein/Barham Road, Barham

### **BUNNALOO**

#### **Radio Network Infrastructure**

- Caldwell Line Road, Bunnaloo

#### **Fuel Depot**

- Bunnaloo Road, Bunnaloo (274,000 litres storage above ground)

### **KORALEIGH**

#### **Water Treatment & Key Distribution Networks**

- Cheer Street, Koraleigh

### **MATHOURA**

#### **Water Treatment & Key Distribution Networks**

- Jones Street, Mathoura

#### **Sewer Treatment & Key Networks**

- Cemetery Road, Mathoura

### **Mobile Tower Infrastructure**

- Cobb Hwy, Mathoura
- Bunnaloo Road, Mathoura

### **Sewer Treatment & Key Networks**

- Cemetery Road, Mathoura

### **NBN**

- NBN Fixed Wireless Tower Mathoura (35.81471/144.88)

### **Radio Network Infrastructure**

- Cobb Hwy, Mathoura

## **MOAMA**

### **Water Treatment & Key Distribution Networks**

- Perricoota Road, Moama

### **Sewer Treatment & Key Networks**

- Hillside Lane, Moama

### **Mobile Tower Infrastructure**

- Cobb Hwy, Moama (Moama Water Towers)
- Perricoota Road, Moama

## **MOULAMEIN**

### **Water Treatment & Key Distribution Networks**

- Pretty Pine Road, Moulamein

### **Sewer Treatment & Key Distribution Networks**

- Baldon River, Moulamein

### **Mobile Phone Infrastructure**

- Tallow Street Moulamein

### **Radio Network Infrastructure**

- Baldon Road, Moulamein

## **MURRAY DOWNS**

### **Water Treatment & Key Distribution Networks**

- Murray Downs Drive, Murray Downs

### **Sewer Treatment & Key Networks**

- Deniliquin Road, Murray Downs

## **TOOLEYBUC**

### **Water Treatment & Key Distribution Networks**

- Grant Street, Tooleybuc

### **Sewer Treatment & Key Networks**

- Grant Street, Tooleybuc

**Radio Network Infrastructure**

- Scott Street, Tooleybuc

**WAKOOL****Radio Network Infrastructure**

- Noorong Road, Wakool

**Water Treatment & Key Distribution Networks**

- Burraboi Road, Wakool

**Sewer Treatment & Key Networks**

- Deniliquin Road, Wakool

**Mobile Phone Infrastructure**

- Koala Street, Wakool

**WOOMBOOTA****Mobile Phone Infrastructure**

- Perricoota Road, Woomboota

**OTHERS****Mobile Phone Infrastructure**

- View Street, Koondrook
- Balpool Road, Niemur

**Radio Network Infrastructure**

- Cobb Hwy Deniliquin 2QN Tower
- Cobb Hwy, 104.5 FM Tower
- Emergency Services/Murray River Analogue Radio Towers
- Barham Road, Deniliquin

**Telephone Exchanges**

- Contact NSW Emergency Services Liaison Officer

## ANNEXURE B – VULNERABLE PERSON NETWORK -KNOWN SERVICE PROVIDER LIST

Organisation	Service Provider Type	Contact Name	Contact Phone	Email Address
Anglicare Echuca	Homecare Package Provider	Jess Dunne	0409 879 715	<a href="mailto:jessica.dunne@anglicarevic.org.au">jessica.dunne@anglicarevic.org.au</a>
Australian Unity - Branch Manager/Broken Hill	HCP - Western/Wakool area	Glenda Johnston	1300 282 608	<a href="mailto:IALBrokenHill@australinunity.com.au">IALBrokenHill@australinunity.com.au</a>
Australian Unity - Branch Manager/Albury	HCP - Deni/ Farrer area	Lisa Carey/Albury	1300 271 428	
Care Connect	Homecare Package Provider	Leanne Cruse	0419 480 550 1300 866 228	<a href="mailto:lcruse@careconnect.org.au">lcruse@careconnect.org.au</a>
Clear Life (Disability Services)	Disability Provider	Paul Clear	0439 668 848	<a href="mailto:paul@clearlifestylesupport.com">paul@clearlifestylesupport.com</a>
Community Interlink	Homecare Package Provider			
Community Living & Respite	Disability Provider	Leah Taaffe On Call Contact	03 5480 2388 AH 03 5482 6165 0427 802 388	<a href="mailto:htaaffe@clrs.org.au">htaaffe@clrs.org.au</a> <a href="mailto:oncall@clrs.org.au">oncall@clrs.org.au</a>
Cummeragunja	Indigenous Community Care	Belinda Day	03 5869 3343 0426 198 141	<a href="mailto:ceo@vineymorganams.com.au">ceo@vineymorganams.com.au</a>
CWA/St Johns Anglicare	Welfare Agency	Ruth Arthur President/CWA	0407 978 056 03 5453 1711	<a href="mailto:ruth.arthur4@bigpond.com">ruth.arthur4@bigpond.com</a>
Deniliquin LALC	Indigenous Community Care	Rose Dunn	03 5881 4891 0408 462 948	<a href="mailto:lalcd@bigpond.com">lalcd@bigpond.com</a>
Echuca Regional Health	Clinical Care Provider	Robyn Lindsay CEO	03 5485 5000	<a href="mailto:ecc@erh.org.au">ecc@erh.org.au</a>
Forrest Community Services	Homecare Package Provider	On Call Contact	0417 217 032	
Haven Homesafe	Housing Services	Page Gallimore	0438 305 604	
Homes Out West	Social Housing Provider	Natasha Davies	03 5881 4182 0428 211 820	<a href="mailto:natasha.davies@homesoutwest.com.au">natasha.davies@homesoutwest.com.au</a>
Homes Out West	Social Housing Provider	Aileen Hayes Gayle Clarke	0428 629 929 1300 038 233	<a href="mailto:aileen.hayes@homesoutwest.com.au">aileen.hayes@homesoutwest.com.au</a> <a href="mailto:gayle.clarke@homesoutwest.com.au">gayle.clarke@homesoutwest.com.au</a>

Mid Murray Local Emergency Management Plan

Intereach	CHSP, Homecare Package Provider & Disability LAC	Michelle Tai GM Operations	1300 488 226	<a href="mailto:MichelleT@intereach.com.au">MichelleT@intereach.com.au</a>
MDAS Mallee District Aboriginal Services	Indigenous Community Care	Zah Thebe (Manager)	03 5032 8600	<a href="mailto:zthebe@mdas.org.au">zthebe@mdas.org.au</a>
Moama LALC	Indigenous Community Care	John Kerr	0497 129 490 BH only	<a href="mailto:ceo@moamalalc.com.au">ceo@moamalalc.com.au</a>
Moonahculla	Indigenous Community Care	Yarkuwa	03 5881 3312	<a href="mailto:admin@yarkuwa.org.au">admin@yarkuwa.org.au</a>
Murray River Council	Aged care services and Community Transport services/All ages	Leanne Orr	0427 806 398 1300 087 004	<a href="mailto:admin@murrayriver.nsw.gov.au">admin@murrayriver.nsw.gov.au</a>
Murray River Council	Aged care services and Community Transport services/All ages	Leanne Orr	1300 087 004	<a href="mailto:admin@murrayriver.nsw.gov.au">admin@murrayriver.nsw.gov.au</a>
Njernda Aboriginal Services	Indigenous Community Care	Aaron Wallace	03 5480 6252	<a href="mailto:aaronw@njernda.com.au">aaronw@njernda.com.au</a>
Njernda Aboriginal Services	Indigenous Community Care	Kelli Bartlett	03 5480 6252	<a href="mailto:KelliB@njernda.com.au">KelliB@njernda.com.au</a>
Rumbalara Aboriginal Services	Indigenous Community Care	Aaron Chambers	03 5831 2010	<a href="mailto:aaron.chambers@raclimited.com.au">aaron.chambers@raclimited.com.au</a>
Rumbalara Aboriginal Services	Indigenous Community Care	Felicia Dean	03 5831 2010	<a href="mailto:felicia.dean@raclimited.com.au">felicia.dean@raclimited.com.au</a>
Salvation Army-Southwest NSW Area	Welfare Agency	Norm Archer	0428 250 224	<a href="mailto:norm.archer@salvationarmy.org.au">norm.archer@salvationarmy.org.au</a>
Southern Cross Care	Homecare Package Provider	Deb Mitchell	0448 856 846 03 5881 2788	<a href="mailto:dmitchell@sccliving.org.au">dmitchell@sccliving.org.au</a>
Southern Cross Care	Homecare Package Provider	Jill Patience	03 5482 2973 0429 906 567	<a href="mailto:jpatience@sccliving.org.au">jpatience@sccliving.org.au</a>
Integrated Rural Health Service & Community Health		Paul Smith	0427 805 443	<a href="mailto:psmith@shdh.org.au">psmith@shdh.org.au</a>
Uniting Agewell - Loddon/Moama	Homecare Package Provider	Kaylene DeWacht	03 8527 5800	<a href="mailto:loddon@unitingagewell.org">loddon@unitingagewell.org</a>
Uniting Agewell - Swan Hill	Homecare Package Provider	Alison Caldwell	03 5048 2400	<a href="mailto:Acaldwell@unitingagewell.org">Acaldwell@unitingagewell.org</a>
Villa Maria	Homecare Package Provider	Sally Carrington	417333865	<a href="mailto:Sally.Carrington@vmch.com.au">Sally.Carrington@vmch.com.au</a>
Viney Morgan Health Services	Indigenous Community Care	Belinda Day	03 5869 3343 0426 198 141	<a href="mailto:ceo@vineymorganams.com.au">ceo@vineymorganams.com.au</a>
Vinnies	Welfare Agency	Vanessa McKay	03 5881 7411	



## Mid Murray Local Emergency Management Plan

Vinnies Welfare Services - Barham	Welfare Agency	Jenny Cain Kate Gyofi	0499 382 885 0428619146	<a href="mailto:wcf.cf.barham@vinnies.org.au">wcf.cf.barham@vinnies.org.au</a> <a href="mailto:kate.mitchell@gmail.com">kate.mitchell@gmail.com</a>
Wamba Wamba (Wamba Wamba LALC)	Indigenous Community Care	Helen Atkinson Maisie Moore	0432612911 0413417505	wambawambalalc@gmail.com colin@cslc.net.au maisielmoore@hotmail.com
Yarkuwa - Deniliquin	Indigenous Community Care	David Carew	03 5881 3312	<a href="mailto:admin@yarkuwa.org.au">admin@yarkuwa.org.au</a>

## ANNEXURE C – VULNERABLE FACILITIES LIST

## EDWARD RIVER COUNCIL

Name	Type	Address	Telephone	Population
Deniliquin Hospital	Hospital (Public)	Charlotte Street, Deniliquin	03 58822800	Varies (61 Beds plus Staff)
Navourina	Aged Care Facility	5-9 Macauley Street, Deniliquin	03 58813944	Varies (50 Beds plus Staff)
Orana Southern Cross Homes	Aged Care Facility	Cnr Poictiers St & Napier St, Deniliquin	03 58812766	Varies (60 Beds plus Staff)
Deniliquin Childrens Centre	Early Childcare	364-370 Whitelock Street, Deniliquin	03 58812394	32
Deniliquin Pre-School	Pre School	364-370 Whitelock Street, Deniliquin	03 58812394	66
Goodstart Early Learning	Pre School	81 Hardinge Street, Deniliquin	03 58815594	50
Kids Choice Childcare Centre	Pre School	74 Hardinge Street, Deniliquin	03 58814558	45
Intereach OOHS (Out Of School Hours) Hours 3pm - 6pm school term or 8am - 6pm holiday term	Primary School	Tricket Street, Deniliquin	03 58905200	68
St Michaels School	Primary School	Harrison Street, Deniliquin	03 58811787	120
Deniliquin South Public School	Primary School	Sloane Street, Deniliquin	03 58812045	234
Deniliquin North Public School	Primary School	Victoria Street, Deniliquin	03 58811042	177
Edward Public School	Primary School	Butler Street, Deniliquin	03 58812612	106
Blighty Public School	Primary School	Blighty School Road, Blighty	03 58826238	16
Conargo Public School	Primary School	Conargo Road, Conargo	03 58846624	11
Mayrung Public School	Primary School	Mayrung Road, Mayrung	03 58824243	24
Deniliquin High School	High School	Harfleur Street, Deniliquin	03 58811211	460.8
Deniliquin Institute of Tafe	Mature Age School	Poictiers Street, Deniliquin	03 58822000	Varies

<b>Caravan Parks</b>				
<b>Name</b>	<b>Type</b>	<b>Address</b>	<b>Telephone</b>	<b>Number of Sites</b>
Deniliquin Riverside Caravan Park	Caravan Park	20-24 Davidson Street, Deniliquin	03 5881 1284	31 Unpowered (Max 6 per site) 38 Powered (Max 6 per site) 9 Cabins (Max 94 overall)
Big4 Deniliquin Holiday Park	Caravan Park	Lot 100 Ochertyre Street, Deniliquin	03 5881 1131	
McLeans Beach Holiday Park	Caravan Park	1 Butler Street, Deniliquin	03 5881 2448	14 Unpowered 85 Powered 10 Cabins 200 Annuals 5 Permanent
Pioneer Tourist Park	Caravan Park	167 Cobb Highway, Deniliquin	03 5881 5066	6 Cabins 1 Cottage 17 Powered sites 8 Unpowered sites
Deni-Car-o-tel & Caravan Park	Caravan Park	46 Crispe Street, Deniliquin	03 5881 1732	16 Cabins 6 Powered sites

---

**MURRAY RIVER COUNCIL**

<b>Name</b>	<b>Type</b>	<b>Address</b>	<b>Telephone</b>	<b>Population</b>
Community Living and Respite Services	Supported Accommodation	Contract Office at 26A Percy Street, Echuca	03 5480 2388 A/H 03 5482 6165	9 Homes
Barham Koondrook Memorial Hospital	Hospital/Aged Care	Punt Road, Barham	03 54511000	6 Beds
Murray Haven Home for the Aged	Aged Care Facility	Punt Road, Barham	03 54532080	55 Units
Moulamein Retirement Village & Hostel	Aged Care Facility	38 Turora Street, Moulamein	03 58875261	16 Units
Allen Court Retirement Village	Aged Care Facility	61 Regent Street, Moama	03 5480 9147	70 Units
Gateway Lifestyle Moama	Aged Care Facility	6 Boyes Street, Moama	02 4945 3405	198 Houses
Jacana Green Retirement Village	Aged Care Facility	Jacana Avenue, Moama	03 5480 9453	47 Units
Mathoura Retirement Village	Aged Care Facility	Mathoura Street, Mathoura	03 5884 3258	8 Units
Moama Lions Community Village	Aged Care Facility	Various	03 5482 1284	28 Units
Murrayvale Aged Care	Aged Care Facility	63 Regent Street, Moama	03 5482 1311	50 Beds
Southern Cross Apartments	Aged Care Facility	82 Regent Street, Moama	03 5881 2766	57 Beds
Southern Cross St Aloysius Retirement Living	Aged Care Facility	20 Echuca Street, Moama	1800 632 314	11 Units
Mathoura Public School	Primary School	Frome Street, Mathoura	03 5884 3314	50
Mathoura Pre School	Pre School	Mathoura Street, Mathoura	03 5884 3362	25
Bunnaloo Public School	Primary School	Fitzroy Street, Bunnaloo	03 5489 7275	29
Moama Public School	Primary School	Simms Street, Moama	03 5482 1564	129
Moama Anglican Grammar School	Primary & Secondary School	Kirchhofer Street, Moama	03 5480 5900	700 Students 100 Staff
Goodstart Early Learning Centre	Pre School	1a Martin Street, Moama	03 5480 9166	60

## Mid Murray Local Emergency Management Plan

<b>Name</b>	<b>Type</b>	<b>Address</b>	<b>Telephone</b>	<b>Population</b>
Moama & District Pre School Centre	Pre School	Regent Street, Moama	03 5482 1224	100
Barham Public School	Primary School	Wakool Street Barham	03 5453 2133	158
Barham High School	High School	38 Gonn Street Barham	03 5453 2322	150
Barham Pre School	Pre School	49 Noorong Street Barham	03 5453 2308	50
Moulamein Public School	Primary School	14 Brougham Street Moulamein	03 5887 5208	69
Moulamein Pre-School	Pre-School	15 Turora Street Moulamein	03 5887 5246	20
Tooleybuc Pre-School	Pre-School	51 Cadell St. Tooleybuc	03 5030 5589	20
Tooleybuc Central School	Primary School	Murray Street Tooleybuc	03 5030 5422	117
Wakool Burraboi Public School	Primary School	Flinders Street Wakool	03 5887 1126	8
Wakool Pre-School	Pre-School	32 Bass Street. Wakool	03 5887 1122	20

<b>Caravan Parks</b>				
<b>Name</b>	<b>Type</b>	<b>Address</b>	<b>Telephone</b>	<b>No. of caravan sites</b>
Murray River Holiday Park	Caravan Park	2 Blair Street, Moama	1800 357 215	28 Cabins 14 Powered sites
Moama Riverside Holiday Park	Caravan Park	Cnr Cobb Highway & Shaw Street, Moama	03 5482 3241	36 Cabins 34 Powered sites 5 Unpowered sites
Discovery Parks Maidens Inn	Caravan Park	Deniliquin Street, Moama	03 5480 9253	113 Cabins 122 annual / permanent / sites 197 Powered sites 5 Unpowered sites
Moama Waters	Caravan Park	96 Old Barmah Road, Moama	03 5480 7717	96 Powered sites 31 Cabins / Villas
Barham Caravan & Tourist Park	Caravan Park	1 Noorong Street, Barham	03 5453 2553	34 Powered 25 camp sites
Barham Lakes Caravan Park	Caravan Park	138 E Barham Road, Barham	03 5453 2009	44
Koondrook Caravan Park	Caravan Park	5 Keene Street, Koondrook	03 5453 2103	32
Moulamein Lakeside Caravan Park	Caravan Park	41 Brougham Street, Moulamein	03 5887 5206	35
Murraybank Caravan Park	Caravan Park	Picnic Point Road, Mathoura	03 5884 3518	Email sent
Picnic Point Caravan Park	Caravan Park	Picnic Point Road, Mathoura	03 5884 3375	76
Liston Caravan Park	Caravan Park	Morris Street, Mathoura	0410 112 815	30
Gulpa Retreat Tourist Park	Caravan Park	32 Picnic Point Road, Mathoura	0427 580 904	Email sent
Morning Glory River Resort	Resort / Caravan Park	Lot 1 Gilmour Road, Moama	03 5869 3357	100
Tooleybuc Pet Friendly Caravan Park	Caravan Park	63 Murray Street, Tooleybuc	03 5030 5025	Email sent
Kyalite Caravan Park	Caravan Park	Talbot Road, Kyalite	03 5038 2221	Email sent

## ANNEXURE D – HAZARDS &amp; RISKS SUMMARY

A Local Emergency Risk Management (ERM) Study has been undertaken by the Edward River Council & Murray River Council Local Emergency Management Committee identifying the following hazards as having risk of causing loss of life, property, utilities, services and/or the community's ability to function within its normal capacity. These hazards have been identified as having the potential to create an emergency. The Emergency Risk Management Study should be referenced to identify the complete list of consequences and risk descriptions.

Hazard	Risk Description	LGA	Likelihood Rating	Consequence Rating	Risk Priority	Combat/Responsible Agency
Agricultural (Animal/Plant)	An agricultural/horticultural incident that results, or has potential to result, in the spread in a communicable disease or infestation	Edward River	Possible	Major	Extreme	NSW DPI
		Murray River	Possible	Major	Medium	NSW DPI
Bridge Collapse	Failure of a major bridge structure with or without warning owing to structural failure or as a result of external/ internal events or other hazards/ incidents.	Edward River	Rare	Moderate	Medium	LEOCON
		Murray River	Unlikely	Extreme	High	LEOCON
Communicable Disease (Human)	Pandemic illness that affects, or has potential to affect, large portions of the human population	Edward River	Possible	Major	Extreme	NSW HEALTH
		Murray River	Unlikely	Extreme	High	DEPT. OF HEALTH
Earthquake	Earthquake of significant strength that results in localised or widespread damage	Edward River	Rare	Minor	Low	LEOCON
		Murray River	Rare	Minor	Low	LEOCON
Fire (Bush)	Major fires in areas of bush or grasslands	Edward River	Possible	Minor	Medium	NSW RFS & FRNSW
		Murray River	Possible	Minor	Medium	NSW RFS & FRNSW
Fire (Grass)	Major fires in areas of bush or grasslands	Edward River	Likely	Moderate	High	NSW RFS & FRNSW

		Murray River	Likely	Moderate	High	NSW RFS & FRNSW
Rural Fire Districts	Major fires in areas of bush or grasslands	Edward River				
		Murray River	Possible	Moderate	Medium	NSW RFS
Urban Fire Districts	Major fires in areas of residential and industrial	Edward River				
		Murray River	Possible	Major	Medium	FRNSW
Flood (Riverine)	River flows exceed the capacity of normal river systems resulting in flood waters escaping an inundating river plains	Murray River	Rare	Extreme	Medium	NSW SES
		Edward River	Unlikely	Catastrophic	Extreme	NSW SES
Flood (100 yr ARI)	River flows exceed the capacity of normal river systems and breach the levee system resulting in damage to property, failure of infrastructure and displacement of up to 5000 people	Murray River				
		Edward River	Possible	Minor	Medium	NSW SES
Flood (30 yr ARI in Deniliquin)	River flows exceed the capacity of normal river systems resulting in flood waters escaping and inundating the Davidson Street area creating failure of infrastructure, flooding dwellings, and isolation of entire town and displacement of up to 1000 north Deniliquin residents	Edward River	Possible	Minor	Medium	NSW SES
		Murray River				
		Edward River	Possible	Minor	Medium	NSW RFS



Flood (30 yr ARI in various areas in Conargo)	River flows exceed the capacity of normal river systems resulting in flood waters escaping and inundating various areas of Conargo causing damage to property, failure of infrastructure (road, power) and displacement of up to 100 people	Edward River Murray River	Possible	Minor	Medium	NSW RFS
		Edward River	Possible	Minor	Medium	RFNSW
Hazardous Materials Incident	Hazardous material incident as a result of an incident or accident	Murray River	Possible	Moderate	Medium	RFNSW
		Edward River	Possible	Minor	Medium	SEOCON
Heatwave	Three or more days of high maximum and minimum temperatures that are unusual for that location	Murray River	Possible	Major	Medium	SEOCON
		Edward River	Possible	Moderate	High	NSW SES
Storm	Severe storm with accompanying lightening, hail, wind, and/or rain that causes severe damage and /or localised flooding (includes tornado)	Murray River	Possible	Moderate	Medium	NSW SES
		Edward River	Possible	Minor	Medium	LEOCON
Transport Emergency (Road) (Rail)	A major vehicle accident that disrupts one or more major transport routes that can result in risk to people trapped in traffic jams, restrict supply routes and/or protracted loss of access to or from the area	Murray River	Possible	Moderate	Medium	LEOCON LEOCON
		Edward River	Possible	Minor	Medium	LEOCON
Transport Emergency (Air)	Aircraft crashes in LGA resulting in large number of fatalities, injuries and/or damage to property	Murray River	Rare	Major	Medium	LEOCON
		Edward River				

Hazard	Risk Description	LGA	Likelihood Rating	Consequence Rating	Risk Priority	Combat/Responsible Agency
Transport Emergency (Waterways)	A major accident that results in environmental damage and major recovery operation	Edward River Murray River	Rare	Major	Low	TRNSW & LEOCON
		Edward River	Possible	Minor	Medium	LEOCON
Utilities Failure	Major failure of essential utility for unreasonable periods of time as a result of a natural or man-made occurrence.	Murray River	Possible	Moderate	Medium	LEOCON

## ANNEXURE E – LOCAL SUB PLANS, SUPPORTING PLANS & POLICIES

Responsibility for the preparation and maintenance of appropriate sub and supporting plans rest with the relevant Combat Agency Controller or the relevant Functional Area Coordinator.

The sub/supporting plans are developed in consultation with the Edward River & Murray River LEMC and the community.

The plans listed below are supplementary to this EMPLAN. These plans are retained by the LEMO on behalf of the LEMC and public release versions are available on the Council Website.

<b>Plan/Policy</b>	<b>Purpose</b>	<b>Combat/ Responsible Agency</b>
Cummeragunja Community Action Plan	To prepare, contain and/or eliminate a pandemic spread within Cummeragunja Community	NSW Health & NSW Police
Moonahcullah Community Action Plan	To prepare, contain and/or eliminate a pandemic spread within Moonahcullah Community	NSW Health & NSW Police
Wamba Wamba Community Action Plan	To prepare, contain and/or eliminate a pandemic spread within Wamba Wamba Community	NSW Health & NSW Police
Murray River Emergency Risk Management Report (July 2008, updated 2012, 2020)	Addresses Natural, Technological and Biological risks that may affect the Murray River community	Local Emergency Operations Controller
Draft Mid Murray Bush Fire Risk Management Plan	Covers preparedness measures, the conduct of response operations and the coordination of immediate recovery measures from bush fire within the Murray River Council area	NSW Rural Fire Service
Murray River Flood Emergency Sub Plan (yet to be adopted by the Committee)	Covers preparedness measures, the conduct of response operations and the coordination of immediate recovery measures from flooding within the Murray River Council area	NSW State Emergency Service
Murray River Crossings – Incident Response Sub-Plan of the Murray District (2009)	To assist in the management of traffic in the event of a closure of one of the Transport NSW (TfNSW) managed Murray River crossings (Echuca- Moama, Tooleybuc-Piangil, Swan Hill-Murray Downs, Barham-Koondrook Bridges)	TfNSW
Moama Sewer and Sewerage Treatment Plant Pollution Incident Response Management Plan	Protection of the Environment Operations Act (1997) requires licensees to prepare, implement and test pollution-incident management plans (that include community notification and communication protocols) for each of their licensed activities according.  Smoke/fire, chemical spill, unusual odours, incapacitated persons or wildlife	EPA  Fire and Rescue NSW

	Flood, pump station failure	SES
COVID-19 Summer Action Plan	To highlight actions to be taken to mitigate COVID-19 risks which may present during the Summer months. The plan identifies the consultation process and is aligned with the National Health Directives with the flexibility to move with the government recovery stepped process.	NSW Police
NSW Energy & Utility Services Functional Area Supporting Plan (EUSPLAN)	This plan has been prepared as a supporting plan to the NSW State Emergency Management Plan (EMPLAN) to coordinate the management of disruptions to energy and utility supply within New South Wales.	NSW Government
Deniliquin Local Flood Plan	Flood mitigation	NSW State Emergency Service
Deniliquin Local Bush Fire Management Plan	Bush fire mitigation	NSW Rural Fire Service
Deniliquin Council Business Continuity Plan	Enable Council to continue core business should they be impacted by an emergency	Other
Deni Ute Muster Emergency Plan	Safety and public order at Ute Muster event	Other
Deniliquin Airport Emergency Plan	Airport incident response plan	Other
Management of Large Animals		
Management of Saleyards		